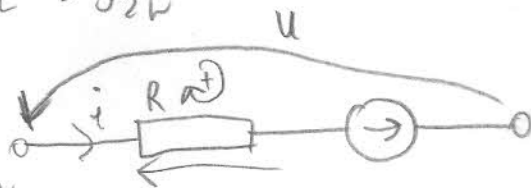


Cedna uloždu varndydego - to samo napięcie!!!

Cedna uloždu serejanego - ten sam prąd!!!

Transformacja

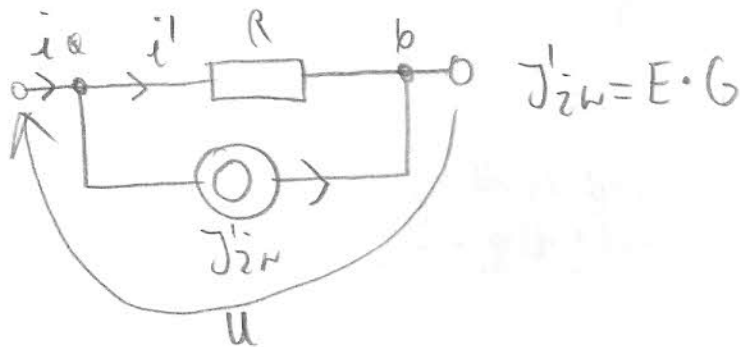
$$E \rightarrow J'_{iz}$$



$\Pi K_1$

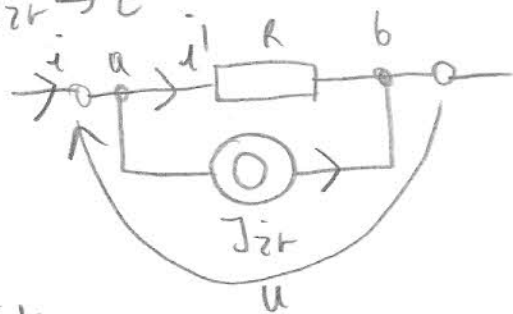
$$-u - E + R \cdot i = 0 \quad | :R$$

$$\underbrace{-\frac{u}{R}}_{i'} - \underbrace{\frac{E}{R}}_{J'_{iz}} + i = 0$$



Transformacja

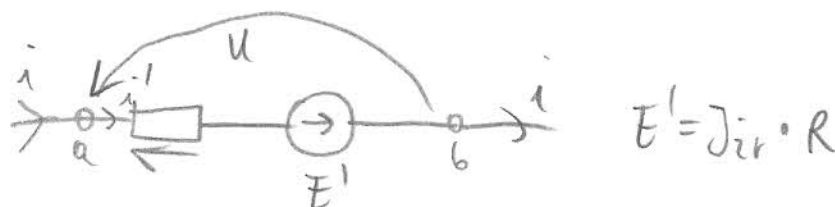
$$J_{iz} \rightarrow E'$$



$\Pi K$

$$i - i' - J_{iz} = 0 \quad | \cdot R$$

$$\underbrace{i \cdot R}_{u} = \underbrace{i' \cdot R}_{u} - \underbrace{J_{iz} \cdot R}_{E}$$



Jak prąd upływa do węzła dodat'

Jak prąd wypływa z węzła to -